

# EDCON-COMPONENTS

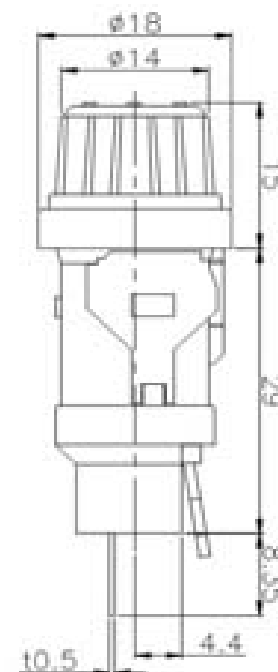


## Technical Discription

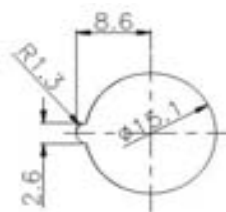
## Drawing

EDCON-COMPONENTS Fuse Holders features for easy removal, clearly printed / imprinted "FUSE" for easy panel identification and keyed mounting hole requirement for anti rotation safety. All fuse holders include mounting washer and solder lugs for wiring.

Rated Current	15A / 250VAC
Insulation Resistance at 500VDC	>1000MΩ Min.
Contact Resistance	<5mΩ @ 1A DC
Dielectric Strength for 60seconds	>AC3000V / 60°
Material Contact:	CuZn37 + Ni+Sn
Terminal	Soldering Terminal
Material Body:	PC UL 94V0
Thickness of Panel	1,0 / 1,2 / 1,6 / 2,0mm



## Panel Layout



## Approvals

UL

## Panel Mount Fuse Holder for 6,3x32mm

Part No.: **R54101**

Customer:

DRW:	Jason	CHKD	Wilson	MATL:	Wilson	TOLERANCE	Mason	DATE	30.11.2012
APPD:	Schumi			FINISH	Jamy		Sheet No.	1 from 2	

[www.edcon-components.com](http://www.edcon-components.com)

email: [info@edcon-components.com](mailto:info@edcon-components.com)

# EDCON-COMPONENTS



## Ordering Informations

Serie	Range	Panel thickness	ROHS	Packing						
-------	-------	-----------------	------	---------	--	--	--	--	--	--

<b>R54101</b>	-	<b>B</b>	<b>A</b>	<b>R</b>	<b>BU</b>					
---------------	---	----------	----------	----------	-----------	--	--	--	--	--

<b>B= 10A</b>	<b>A= 1,0mm</b>	<b>R= ROHS Conform</b>	<b>BU= Bulk-Ware</b>
	<b>B= 1,2mm</b>		
	<b>C= 2,0mm</b>		<b>IV= Individual Package</b>
	<b>D= 2,0mm</b>		

<b>Panel Mount Fuse Holder for 6,3x32mm</b>
Part No.: <b>R54101</b>
Customer:

DRW:	Jason	CHKD	Wilson	MATL:	Wilson	TOLERANCE	Mason	DATE	30.11.2012
APPD:	Schumi			FINISH	Jamy		Sheet No.	2 from 2	